



East Texas Plant  
2628 US 79 N  
Carthage, TX 75633  
Website: [www.voyagermidstream.com](http://www.voyagermidstream.com)

## WHO IS VOYAGER MIDSTREAM

Voyager Midstream Holdings is an independent midstream company focused on the acquisition and development of natural gas infrastructure across key North American supply basins. Voyager Midstream operates under the following entities: VMH Gas, LLC and its subsidiaries, Fuels Cotton Valley Gathering, LLC, and EasTrans, LLC.

If you observe any unusual or suspicious activity near our pipeline facilities or in the unlikely event an emergency occurs, please call us at any time using one of the numbers listed in this document.

More information on Voyager Midstream can be found at:  
[www.voyagermidstream.com](http://www.voyagermidstream.com)

## WHAT ARE THE SIGNS OF A NATURAL GAS PIPELINE LEAK?

- Blowing or hissing sound
- Dust blowing from a hole in the ground
- Continuous bubbling in wet or flooded areas
- Gaseous or hydrocarbon odor
- Dead or discolored vegetation in a green area
- Flames, if a leak has ignited

## WHAT SHOULD I DO IF I SUSPECT A PIPELINE LEAK?

Your personal safety should be your first concern:

- Evacuate the area and prevent anyone from entering
- Abandon any equipment being used near the area
- Avoid any open flames
- Avoid introducing any sources of ignition to the area (such as cell phones, pagers, 2-way radios)
- Do not start/turn off motor vehicles/ electrical equipment

- Call 911 or contact local fire or law enforcement
- Notify the pipeline company
- Do not attempt to extinguish a natural gas fire
- Do not attempt to operate any pipeline valves

## PIPELINE SAFETY

System failures occur infrequently along the nation's network of interstate natural gas pipeline facilities, and many of these are caused by damage from others digging near the pipeline. We watch for unauthorized digging, but we request your help to notify us.

**ALWAYS CALL 811 BEFORE YOU DIG!**



## PIPELINE LOCATION AND MARKERS

Pipeline markers are used to indicate the approximate location of a natural gas pipeline and to provide contact information. Aerial patrol planes also use the markers to identify the pipeline route. Markers should never be removed or relocated by anyone other than a pipeline operator.



## EMERGENCY CONTACT: 1-833-601-7473

**PRODUCTS/DOT GUIDEBOOK ID#/GUIDE#:**  
Natural Gas 1971 115

## LOUISIANA PARISHES OF OPERATION:

Caddo De Soto

## TEXAS COUNTIES OF OPERATION:

Harrison Rusk  
Panola Shelby

*Changes may occur. Contact the operator to discuss their pipeline systems and areas of operation.*

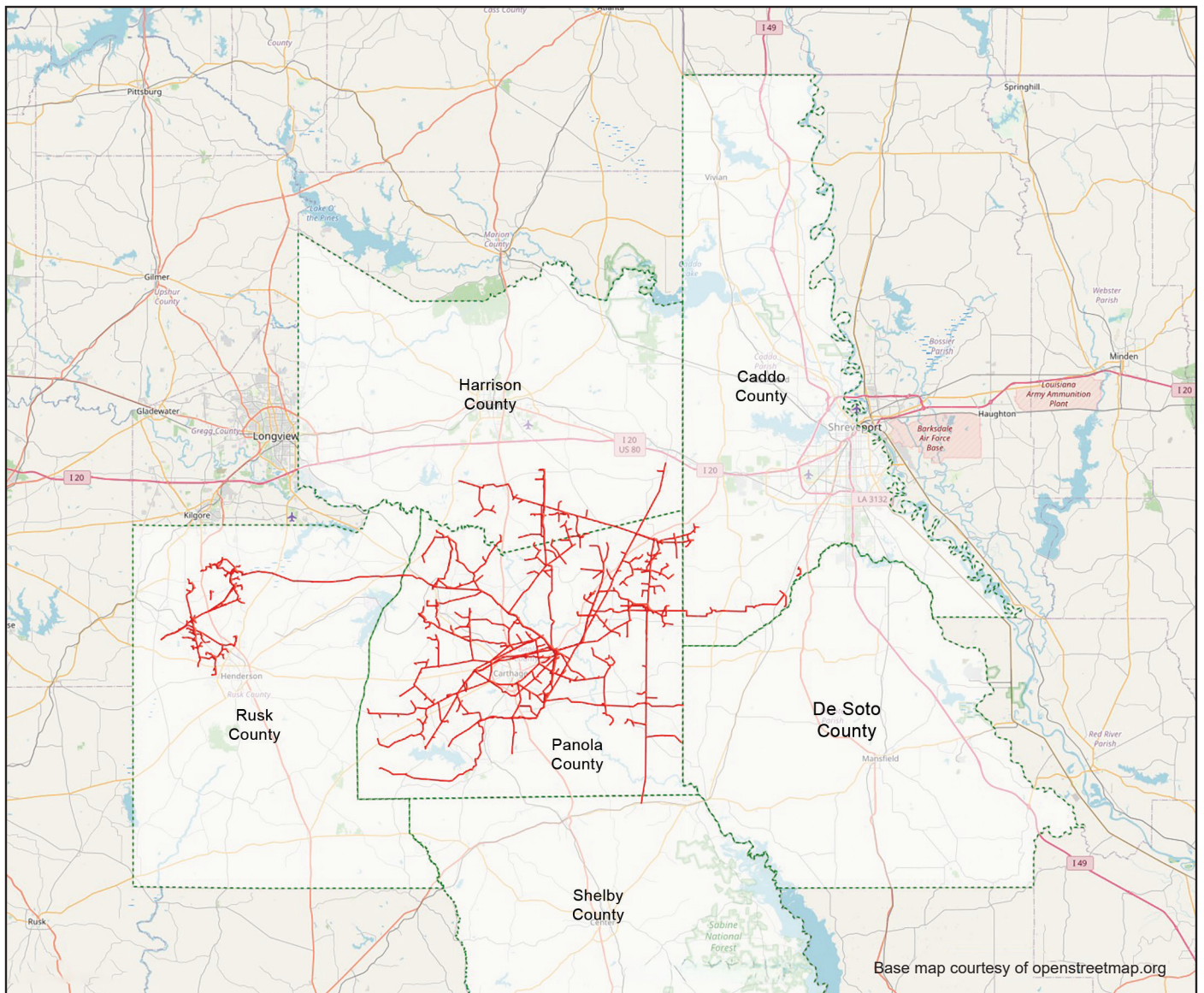
You can also find out where other companies' pipelines are in your area by going to the National Pipeline Mapping System website at  
[www.npms.phmsa.dot.gov](http://www.npms.phmsa.dot.gov).

## EMERGENCY RESPONSE PLANS

An Emergency Response Plan is developed for each pipeline facility to contain, control and mitigate the various types of emergency conditions/situations that could occur at one of our facilities. For more information regarding Voyager Midstream emergency response plans and procedures, contact:

Kirby Ukens  
Phone: (903) 754-0158  
Email: [ukens@voyagermidstream.com](mailto:ukens@voyagermidstream.com)  
Martin McHale  
Phone: (713) 670-6253  
Email: [martin@voyagermidstream.com](mailto:martin@voyagermidstream.com)

## Voyager Midstream



Pipeline Diameter: 2" to 24"